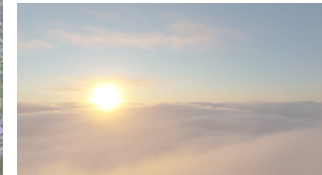
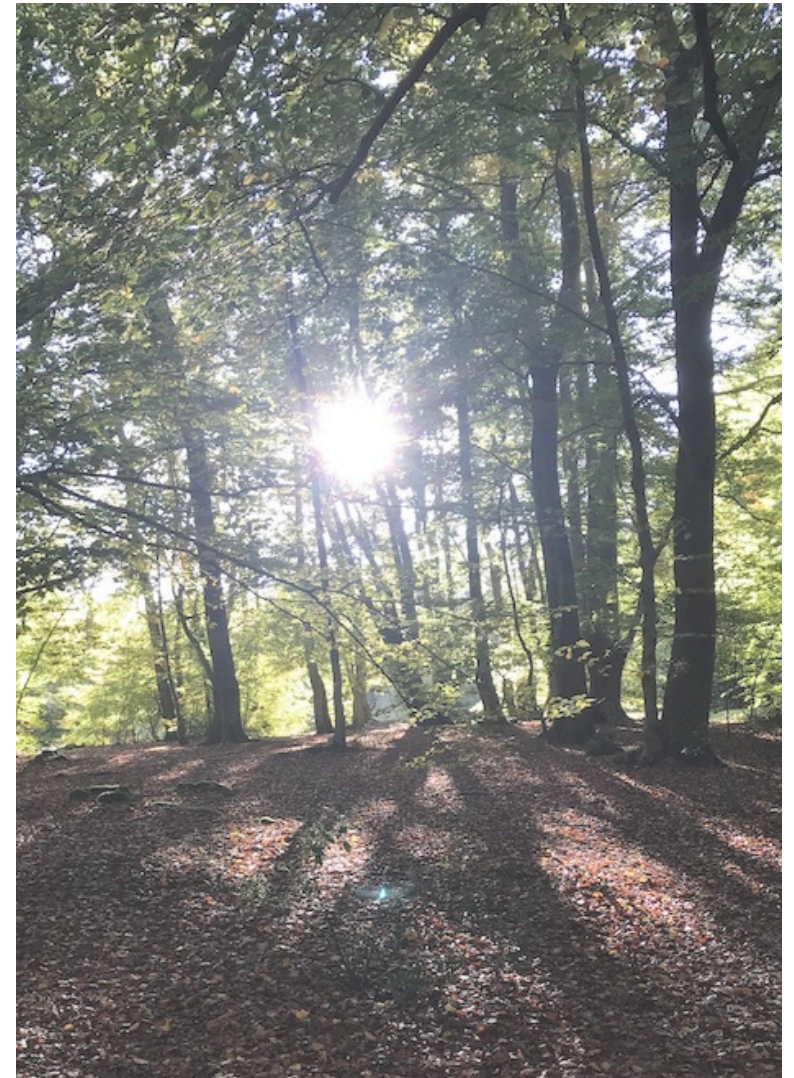


# WOODFORD BAPTIST CHURCH



## Introduction

We long to see God's kingdom come in our nation and local communities, to see His revival power working through all people of all backgrounds, starting with us! We are based in a mixed suburb of London on the edge of Epping Forest but draw from areas up to 30mins drive away. We have long running healthy relationships with other local church leaders. Our membership is 109, however including regular attenders or those connected with the church this would be more around 150 - 200. The church has a long established presence in our community, with various clubs and events most prominently demonstrated through the relatively recent establishment of a distribution centre for Redbridge Foodbank that we host, co-lead and resource. We try to cultivate a culture where people feel safe and supported to step out in faith, a place where everyone can fulfil their God given calling from the young to the elderly.



# CONTENTS

---

- The Church As It Is Now
  - Church Life, Style & Services
  - Prayer & Worship
  - Community, Outreach, Missions & Activities
  - Demographics
  - Leadership & Staff
  - Membership
  - Children & Youth
  - Buildings
- The Surrounding Communities & Area
- Our Heritage & History
- The Direction In Which We Believe God Is Leading Us
- The Senior Leadership Role
- Practical Matters

# “I HAVE COME THAT THEY MAY HAVE LIFE AND HAVE IT TO THE FULL”

JOHN 10:10

## The Church As It Is Now

Our current vision statement is based on the latter part of John 10:10 -

*“I have come that they may have life and have it to the full.”*

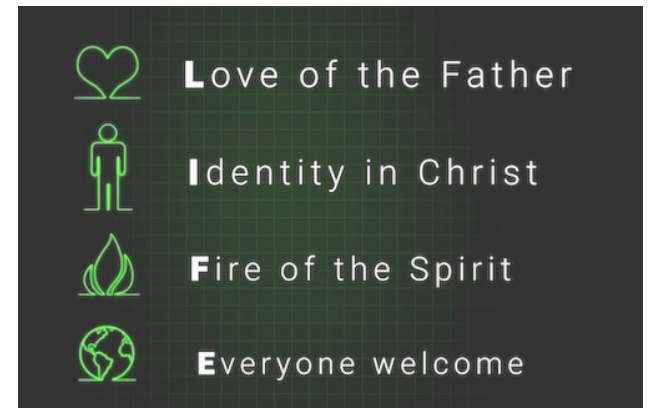
Using the acronym LIFE, we describe our church as one that embodies the:

- **Love** of the Father
- **Identity** in Christ
- **Fire** of the Spirit
- and where **Everyone** is welcome

We believe this vision reflects both who we are now and who we are becoming as a church - a community shaped by **prayer, worship, and service**. Through personal and corporate prayer, warm and welcoming worship and teaching services, active commitment to serving one another and the wider community, and our growing network of Life Groups, we seek to **live out this calling in practical and Spirit-led ways**.

We are very much a church family - a place where close relationships are nurtured, openness is encouraged, and people genuinely ‘do life’ together. Visitors often describe the church as warm, friendly, and like ‘home’. We are aware that the Holy Spirit speaks to and **encounters people in various ways**. Our corporate worship is **contemporary in style** but we welcome opportunities for people to express their **worship of the Lord in personal / individual ways**. **We seek to live in the fullness of the Holy Spirit**, praying for both personal renewal and community revival.

Our services are **informal and welcoming**, with lively and reflective times of worship led by a live band. We seek to be led by the work of the Holy Spirit and provide opportunities for participation through prayer, prophecy, and testimony.



## The Church As It Is Now — Church Life, Style & Services

We gather every Sunday at 10:30am - it's the heartbeat of our church life, where we come together to **worship, pray, and learn from God's Word**. During the week, we have **Life Groups** that meet in homes and online, helping **people connect more deeply, grow in faith, and share life together**. These small groups are a big part of who we are - places where friendships grow, faith gets real, and people find encouragement to live out what they believe. We've seen some amazing fruit from this over the years, though we know there's still room to grow and reach even more people.

As a church family, we've journeyed through many different seasons - **times of growth, renewal, and faithful perseverance**. Through it all, we've stayed rooted in God's Word and in our values of local fellowship, believer's baptism, and shared leadership. One of the highlights of recent years has been seeing people take the step of baptism - nine in the past two years, most of them young people! We usually hold two or three baptism services each year, and they're always such joyful celebrations.

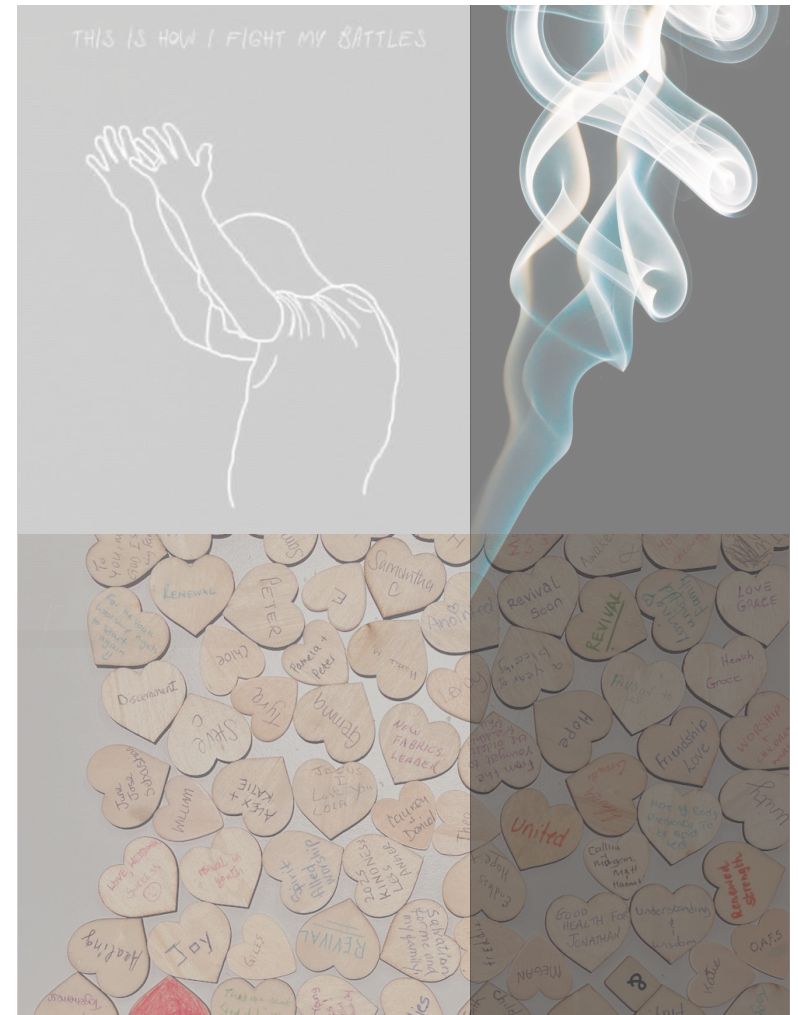
We're deeply thankful for the rich heritage we've been given, and we look forward with expectation - **trusting that the same God who's guided and sustained us through every season will continue to lead us into the future He's planned**.



## The Church As It Is Now — Prayer & Worship

We believe that prayer is the **oxygen** of what we do; it's how **we listen to God, seek His direction**, and stand together as a church family. We hold a Sunday morning gathering before the worship service, where we pray over the service, visitors and different groups and activities. We also meet **every Thursday evening** (term-time), and focus on praying God's will for the church and His blessing over our community. While not everyone can make it each week, those who do find it a powerful and encouraging time together. We desire to see **weekly prayer meetings** become the most attended group within the church.

Throughout the year, we join in with wider initiatives like the **Global 24/7 Week of Prayer** and hold our own **prayer and fasting weekends** a couple of times a year, using a mix of creative and flexible approaches. There are also smaller, ad hoc prayer times that are held for specific groups or needs. Our **text-based prayer network** helps us respond quickly when urgent situations arise, ensuring that no one faces challenges alone. We also make space for **prayer ministry** during our services, supported by a dedicated Prayer Team who are always ready to listen, pray, and encourage others.



## The Church As It Is Now — Community, Outreach, Missions & Activities

Beyond our regular activities, we love creating opportunities to **connect with our friends, neighbours, and the wider community**. Our calendar is full of fun and meaningful events - from our **summer church fun day**, wreath making event at Christmas and our annual much loved 'Carols by Candlelight' service. These gatherings are a great way to build relationships, laugh together and invite others to experience the warmth of our church family.

We also enjoy **partnering with other local churches** and getting involved in wider outreach initiatives always encouraging our congregation to bring along friends and family who may not yet know Jesus. Our heart for the community extends to local schools and residential homes, where we regularly serve and build friendships. Every Monday morning, our **seniors' café offers a welcoming space for conversation**, support and plenty of tea and cake!

We're passionate about **helping people grow in faith and everyday life**. That's why we regularly run **Alpha courses** for both adults and young people. Alongside Alpha, we have hosted workshops that respond to specific needs within the church and community, helping people build stronger relationships and practical life skills. In the past these have included **CAP money** courses, **marriage preparation**, **marriage enrichment**, **parenting & freedom** courses etc...

We have strong, ongoing relationships with our **home-grown missionaries** serving in Europe and Asia, supporting their work through prayer, encouragement and financial gifts. We also give to a range of local and national organisations.



Some of the **groups & activities** that run through the **week** or **annually** include:

- *Carols by Candlelight*
- *Christmas Fayre*
- *Food Bank*
- *Friday Night Youth Club*
- *Friends and Neighbours Lunch (Christmas lunch)*
- *Life Groups*
- *Long Table Lunch*
- *Men's Ministry*
- *Pastoral Support Group*
- *Periods of Prayer & Fasting*
- *Praying Through the Church Membership (one each day)*
- *Prime Time*
- *Space4Kids (Sunday morning)*
- *Street Carols*
- *Sunday Morning Prayer*
- *Thursday Evening Church Prayer*
- *Women's Ministry*
- *Wreath Making*
- *Young Adults*
- *Youth Worship Evenings (run by the young people)*





## The Church As It Is Now — Demographics

Our congregation reflects the **ethnic and social diversity** of South Woodford, with people from the UK, Africa and the Caribbean, Eastern Europe, South America and Asia. We are a multicultural church family, welcoming to those with accessibility needs and neurodiversities. We work hard together to create a space where everyone feels seen and supported.

**This diversity enriches our fellowship** and deepens our shared understanding of being one body in Christ.

## The Church As It Is Now — Leadership & Staff

The elders, trustees, deacons, church secretary and treasurer form a unified leadership team, overseeing the ministry and mission of the church. Each deacon holds responsibility for a specific ministry area, ensuring the practical, pastoral and spiritual care of the fellowship.

We are currently in the process of recruiting an interim full-time children and youth pastor following the previous post-holder's five years of service. We also employ a **part-time administrator** and a **caretaker** to support the church's daily operations.



## The Church As It Is Now — Membership

We have **109 members**, representing all ages and many families with children and youth. Including regular attenders and their families, our Sunday attendance averages between 70 to 110. In 2024 we recorded 130 adults, 4 baptisms, 25 young people and 7 children. We also maintain regular **contact with many others through community activities**, e-newsletters, social media posts and the live-streaming of the services, extending our reach into the local neighbourhood and beyond.

## The Church As It Is Now / Children & Youth

**Children and young people are right at the centre of life** here at Woodford Baptist Church. We've always believed they're not just the church of tomorrow - they're a vital part of the church today. Our children and youth programmes run throughout the week and on Sundays, with something for every age. We run a lively Friday night youth club and are thinking of reinstating a midweek club for primary-aged children, which was very well attended up until the pandemic.

We're also starting to run a series of baby cafés to provide a space for new parents and their babies / toddlers to come and play, with an opportunity to speak to a mid-wife for postnatal care information. We also offer courses on practical topics such as digital parenting for the community.

We're passionate about creating spaces where **children and young people can encounter God for themselves**, grow in faith, and feel part of a caring church family. Each week, we connect with children and teenagers - some from families who don't normally attend church - and it's such a joy to see them learning, laughing and discovering that God knows and loves them deeply. We also love connecting with local schools and community groups, and hope to extend our influence once a **children and youth pastor** is recruited.

- Q.** How would you describe the makeup, character and activity of Woodford Baptist Church?
- A.** *'I personally feel that WBC is such a warm community and had really pushed me to think about my relationship with God and how it can improve', 'good', 'worshipful', 'very passionate in faith', 'fun youth group', 'all ages involved' & 'lively'*

*(...responses taken from our youth consultation)*

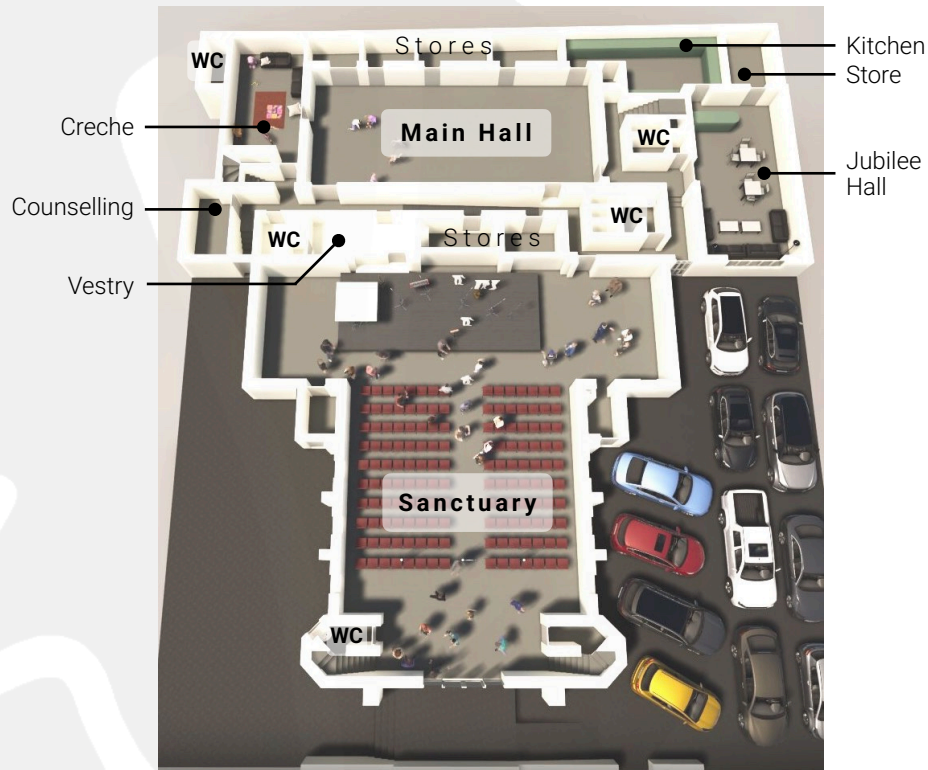


## The Church As It Is Now / Buildings

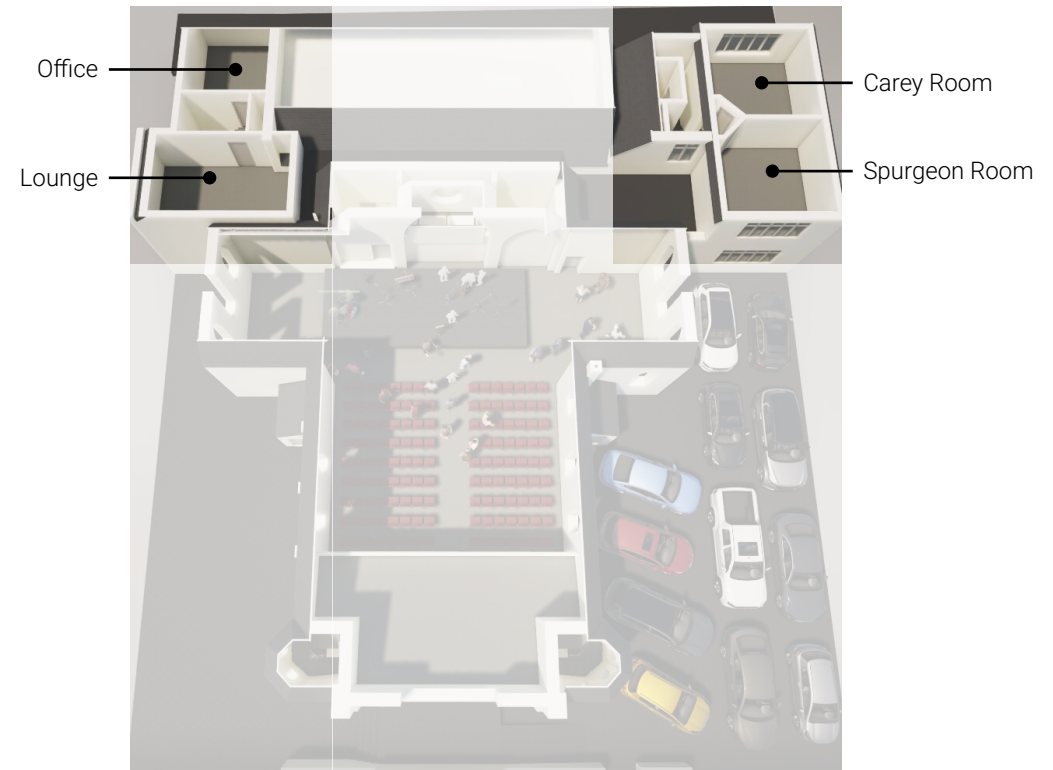
Our main church building dates back to the late 1890s but had a major makeover in 2002, when we removed the old pews, panelling and pipe organ and added new underfloor heating, carpets, staging and chairs. The result is a **warm, flexible and welcoming space** that's used constantly throughout the week. We're equipped with modern audio-visual, lighting and IT systems to support worship and events. Alongside the main church, we have a range of additional halls and rooms - including a sports hall, Jubilee Hall, a large kitchen, a crèche and several meeting rooms and offices - all helping us serve our congregation and wider community.



Ground Floor Plan



First Floor Plan

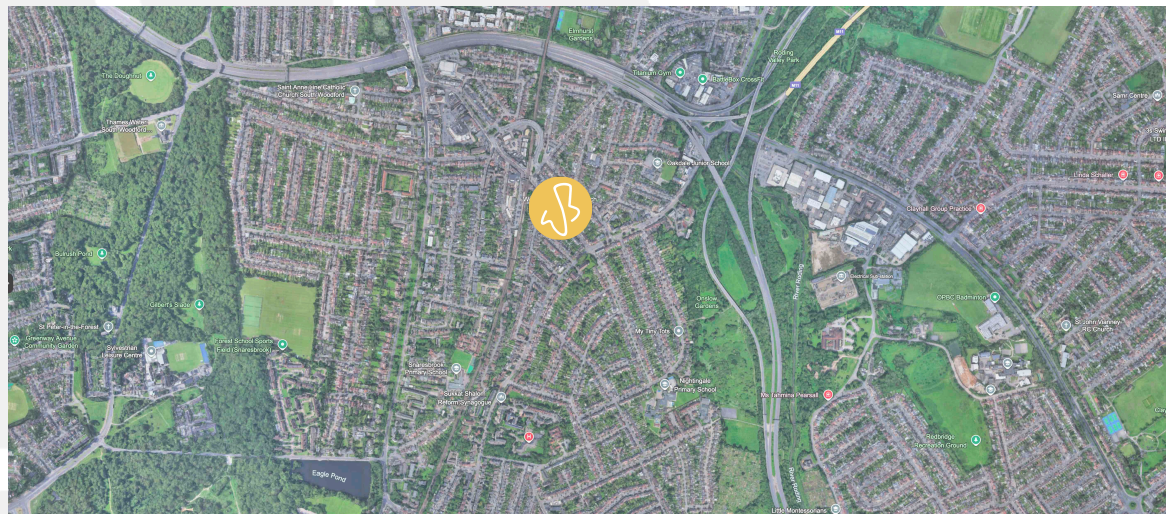


(NB. These layouts are to provide an indication of the main church facilities)

## The Surrounding Communities & Area

Our church is located in South Woodford, part of the **London Borough of Redbridge**, within easy reach of the **Central Line tube** and the **A406 North Circular Road**. The area is relatively affluent, safe and family-orientated, with excellent schools, parks and amenities but there is also much need. **South Woodford is home to a diverse mix of people**, such as professionals, young families and short and long-term residents, creating a dynamic and friendly neighbourhood atmosphere.

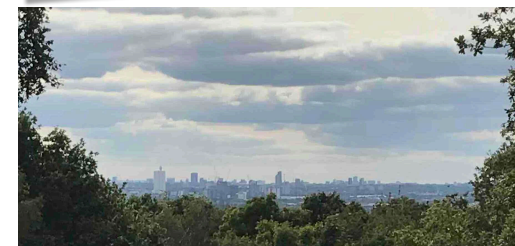
The community reflects a rich diversity that is also seen within our congregation, providing many opportunities for meaningful connection and service. Woodford Baptist Church seeks to be at the heart of this community - **a place where people can find hope, friendship and support**. We value our partnerships with local organisations, schools and other churches as together we work to meet practical needs, strengthen relationships and share God's love with the people of South Woodford.



**Q.** What does South Woodford and the surrounding area feel like?

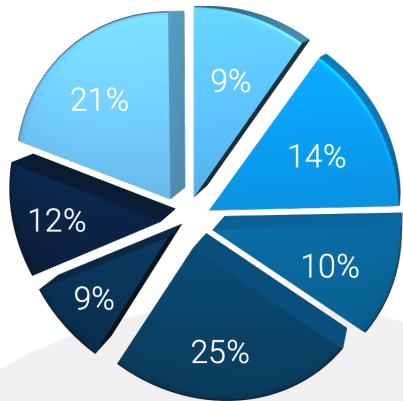
**A.** 'safe', 'calm', 'pretty cool', 'community based', 'family orientated', 'very local', 'pretty chill', 'calm' & 'it feels safe'

(...responses taken from our youth consultation)



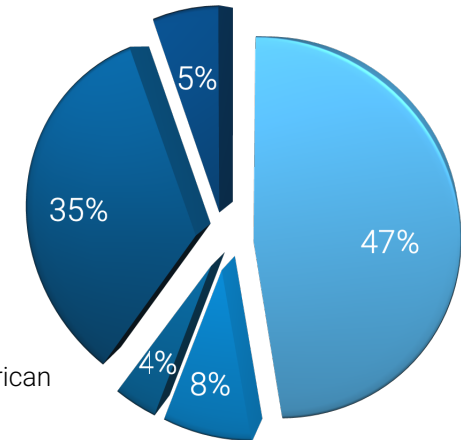
# The Surrounding Communities & Area continued...

Families in Redbridge



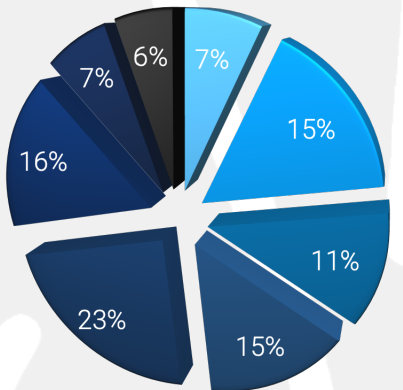
- One-person household: age 55+ years (9%)
- One-person household: other (14%)
- Single-family household: Cohabiting couple family (no children) (10%)
- Single-family household: Cohabiting couple family (with dependent children) (25%)
- Single-family household: Cohabiting couple family (all children non-dependent) (9%)
- Single-family household: Lone-parent household (12%)
- Other household types (21%)

Ethnic Groups in Redbridge



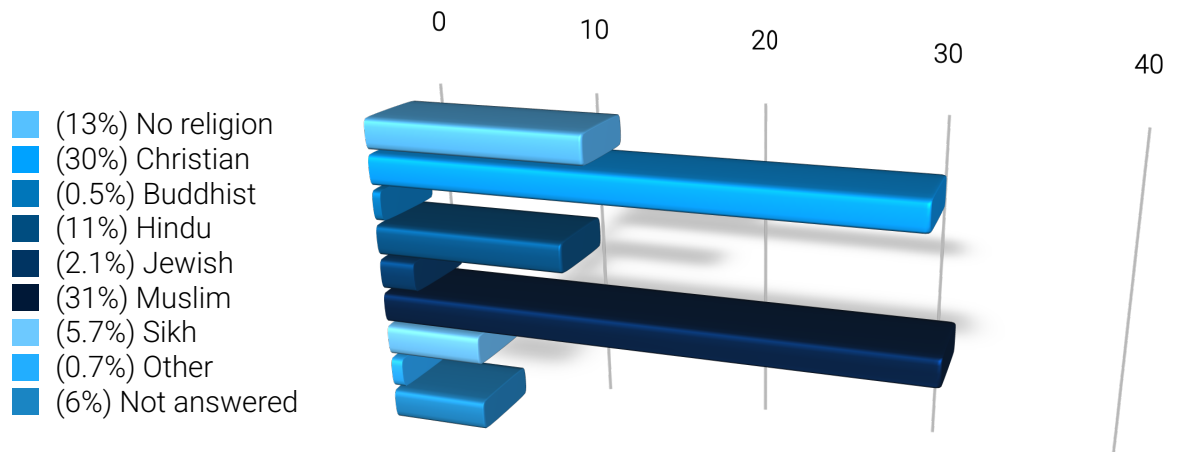
- (47%) Asian, Asian British or Asian Welsh
- (8%) Black, Black British, Black Welsh, Caribbean or African
- (4%) Mixed or Multiple ethnic groups
- (35%) White
- (5%) Other ethnic groups

Age of Redbridge Residents



- below 4 yrs (6.8%)
- 5 to 15 (15%)
- 16 to 24 (11%)
- 25 to 34 (15%)
- 35 to 49 (23%)
- 50 to 64 (16%)
- 65 to 74 (7%)
- 75 + (6%)

Religious Groups in Redbridge



- (13%) No religion
- (30%) Christian
- (0.5%) Buddhist
- (11%) Hindu
- (2.1%) Jewish
- (31%) Muslim
- (5.7%) Sikh
- (0.7%) Other
- (6%) Not answered

(NB. Data obtained from the Office for National Statistics & analysis from the 2021 Census)

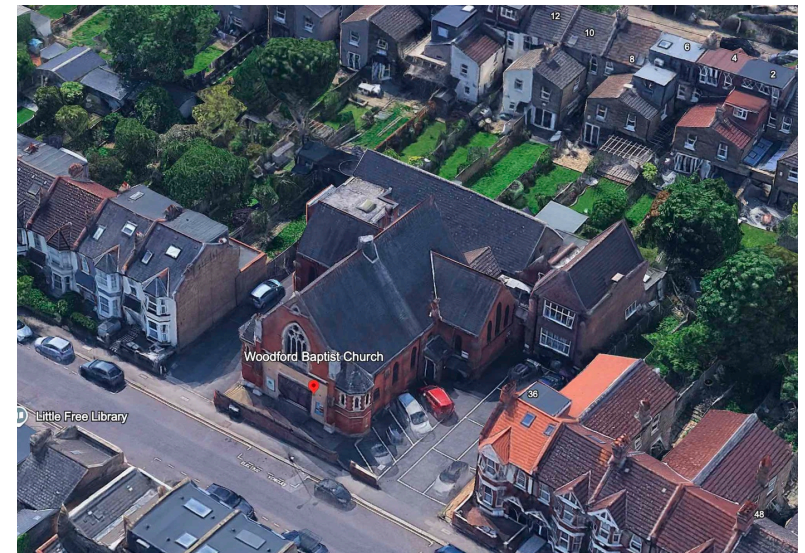
## Our Heritage & History

Woodford Baptist Church was **established in 1881**. We're based in a **lively East London suburb** within the Borough of Redbridge - a wonderfully diverse area where people from all walks of life live side by side. It has historically been an affluent area, though there are pockets of deprivation too and because housing prices can be high, there's a lot of movement as people relocate to more affordable areas. Many locals commute into central London on the Central Line and with South Woodford Station just a short walk from the church, we're right at the heart of it all.

This is a brief paraphrased history of Woodford Baptist Church (derived from accounts collated and written by Harold Ling)...

Woodford Baptist Church sprung up 'where a few like-minded friends had been called together for prayer and consultation' on Friday, 14th October 1881. In September a first payment of £36 was made for the plots one on which the church now stands. They also had meetings held at the houses of each other but more space was needed and so larger private rooms were lent by the early leaders. As numbers rapidly rose and conversions led to a growing attendance the Hall became known as George Lane Baptist Chapel. The foundation stones were laid in 1882 and the building was opened for public worship in July 1882.

For more information on the 1905 revival that was recorded in the press see the following link, <https://ukwells.org/wells/woodford-baptist-church>



## The Direction In Which We Believe God Is Leading Us

We have witnessed **the Lord's faithfulness** to WBC throughout its history. From the small group who prayed and sparked the 1905 revival, to prophetic words over the years about rivers of living water flowing from our church into the community, God has consistently shown **His hand at work**.

Together we are building on the foundations laid in previous years while we continue to seek God to develop and refine our vision. Throughout the years, there has been a faithful remnant at WBC who carry **a deep longing to know the fullness of His love and to live in the power of His Spirit for the sake of His kingdom on earth**. We believe it is His desire that this longing becomes a greater part of our church's culture - shaping who we are and how we live. We long to see this expressed in the growing **fruits of the Spirit**, in an overflow of **genuine devotion to Him**, in the faith to step out more in **spiritual gifts** and in the courage to be **bold witnesses**.

Our 2026 motto is:

***"To become like Jesus and make Him known  
by the power of the Holy Spirit."***

Our prayer is that as each of us meets with Him daily, **face-to-face**, our church family would be stirred with a deeper **hunger for His presence** and a clearer revelation of who Jesus is. Through the power and presence of the Holy Spirit within us, we pray His transforming work **shapes every part of our lives and overflow naturally** in the way we make Him known.

- Q.** What kind of church do you believe God is calling WBC to become in the coming season?
- A.** *'one that praises God', 'youthful', 'family', 'more preaching in service for old and youth' & 'I feel the church is perfect as it is'*

*(...responses taken from our youth consultation)*



## The Senior Leadership Role

We know that no one person will have all of these qualities, yet we believe these are important attributes:

- A heart for **His Presence** - Sensitivity to the Spirit, a desire to welcome & invite His presence in all we do, surrendered to His will
  - A heart to **lead us into His ways**, with love, gentleness & strength
  - A heart for the **apostolic**, being open to hear, see, discern & sense the direction the Lord is setting for us
  - A heart to **equip and release others** in their God given gifting & calling
  - A heart for the **wider community**
  - A heart for **revival** (Acts of the Apostles amongst us - many coming to the Lord and seeing communities transformed)
  - A heart to move in the **prophetic** and nurture this within the church community
- 
- A good understanding and vision of how to **communicate in this age**
  - A good **team leader** (good people skills and servant heart)
  - To be **supportive, understanding and pastoral** (including facilitating a pastoral team)
  - A love and respect for **Scripture** coupled with an excitement to apply this through the teaching of His word
  - To be a guard the church, joining with others in the **'Watchman'** role (Isaiah 62:6)
  - A willingness to be vulnerable and **lead through example** and service
  - A **supportive** home network / family



**Q.** What strengths and particular gifts do you feel are needed in a new minister at this time?

**A.** *'dedicated', 'patient', 'kind', 'friendly', 'determined', 'caring', 'must be articulate when speaking', 'includes all ages', 'good speaker', 'good leadership' & 'they must be a bold believer in Christ, compassionate and grows the fruit of the Spirit and fights in the corner of God'*

*(...responses taken from our youth consultation)*



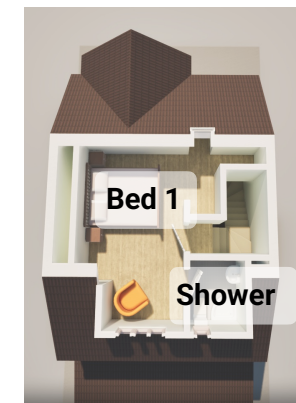
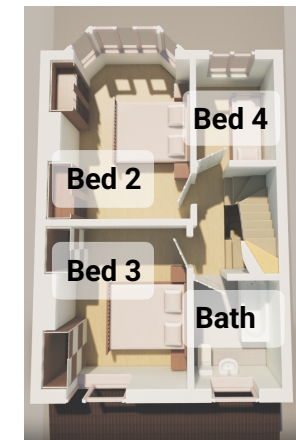
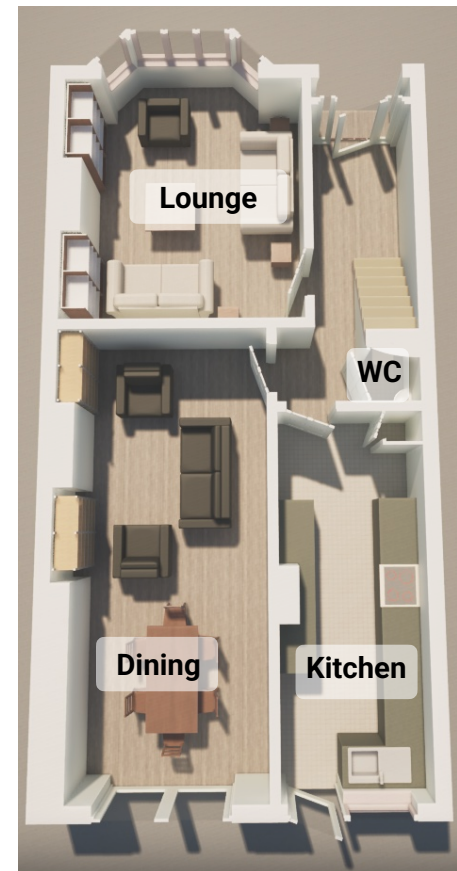
## Practical Matters – Finance

We're a financially independent church, with most of our income coming from the generous and **cheerful giving** of our members for the support of Christ's body, the church, as God commands. We joyfully give away a portion of our income as a church to support missionaries and other ministries. We feel that if we teach what the Bible says, then it becomes something between each member & God. It is the responsibility of each person who commits themselves to membership here to give towards the work of the church and **out of thankfulness**. As a church, we've always believed in **living by faith, not by sight, trusting that God will provide** for all our needs as we continue to plan for future growth & opportunities to serve.

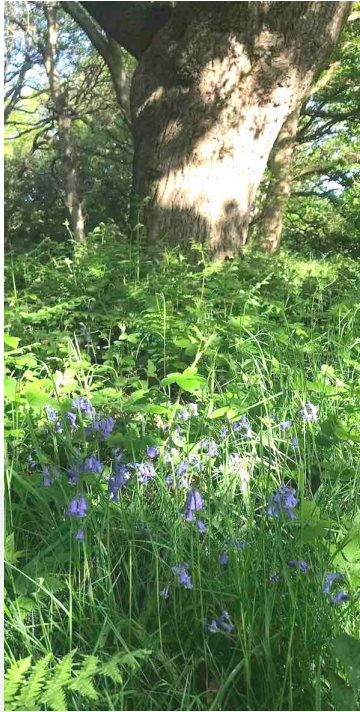
## Practical Matters – Manse

The Church owns a **manse** property in South Woodford. Located within a desirable and safe estate of suburban houses, it is within **a 23min walk or 8 minute drive of the church**. The terraced house has **four bedrooms**, a separate front reception room and ground floor WC. It is spread over three levels and the master bedroom has an ensuite. Depending on the new pastor's requirements, there will be the opportunity to occupy this property.

We will enable and encourage our Minister to participate in the **Baptists Together CDM** programme, **build connections** with other local pastors and to **identify an external mentor figure for regular prayer and personal support**. In addition we would encourage the new Minister to identify if there is **a wider church revival network** that we could align with to provide further support for themselves as well as encouragement for us all regarding how God is moving today.



*(NB. These layouts are derived from the estate agents plans but provide a good impression of the internal layouts and accommodation)*



For more information see these contact details below:

**W:** <https://www.woodfordbaptist.org>

**T:** +44 20 8530 4916

**E:** [secretary@woodfordbaptist.org](mailto:secretary@woodfordbaptist.org)

**Follow on Instagram:** <https://www.instagram.com/woodfordbaptistchurch?igsh=enltYm53a3pkbmtu>

**Facebook:** <https://www.facebook.com/woodfordbaptist>

**X:** <https://twitter.com/WoodfordBaptist>

**YouTube (live stream):** <https://www.youtube.com/@WBCUK>